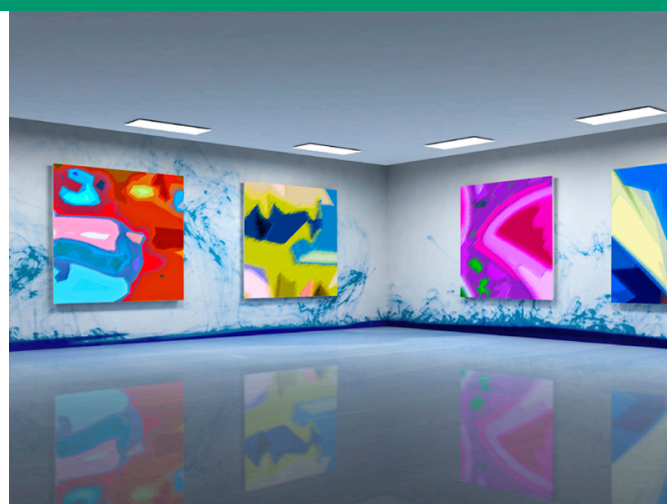


Art prints on stretcher frames, art
and photographic reproductions,
stage construction



Interior Design

euromedia Emotion Canvas wb

Satin gloss artist canvas, which is best printed with water-based dye and pigment ink. It is even possible to use solvent ink. The satin gloss coating makes the canvas particularly suitable for image presentations of graphics, art and photo reproductions.

The structure of the fabric remains very visible. The light glossy inkjet coating is wipe (not water) and scratch resistant. The media has a very fast drying time (instant dry), can be stitched and is also very good for use as a banner.

Dimensions

350g - 0610mm(24') - 12m
350g - 0914mm(36') - 12m
350g - 1118mm(44') - 12m
350g - 1270mm(50') - 12m
350g - 1370mm(54') - 12m

Product Code

70100098483
70100098489
70100098404
70100110145
70100098441



Hints & Tips

Different batches may have different surfaces. You should therefore always produce larger jobs using one batch. For advice on processing and handling textile substrates, please click on the link [Information sheet](#)

euromedia Emotion Canvas wb

Product Properties

Applications

- indoor
- displays
- art
- banners
- trade fairs
- photo-quality printing



Properties

- can be eyelet

Processing Tips

We basically recommend that the print is left to dry out for 24 hours before finishing.

Storage

The product should be stored in its original packaging at a room temperature of 15°C - 25°C and 40 - 60% relative humidity.

Specifications

Material	Canvas
Ink	Waterbased inks
Whiteness	84%
Total thickness	475 mic
Weight	350 g/m ²
Application temperature	23°C / 50% R.F. pH-Value - log (H+): 7

Note

This information relates to the current state of our knowledge and is given without obligation to provide you with information about our products and their applications. The information we give does not absolve you from carrying out your own trials and tests of the suitability of our products for your intended application. We reserve the right to carry out modifications, which will result in an improvement to the product.

euromedia

FUJIFILM Deutschland

Niederlassung der FUJIFILM Europe GmbH
Heesenstraße 31 40549 Düsseldorf DE
Tel: +49 211-5089-326
Fax: +49 211-5089-287
grafische_systeme@fujifilm.de